



Equity Through Impact

While equity initiatives take on many forms within districts, we believe that equity can only be demonstrated by scientifically documenting the impact that equity efforts are having on student outcomes.

Academic growth is an important student outcome to assess the progress of individual students, and to assess the effectiveness of equity initiatives.

That said, not all student growth measures are the same. As an industry, districts need to move beyond comparing student growth rates to national or state averages, toward student growth that compares students to themselves in a personalized way. This is accomplished by setting growth projections for students based on their own longitudinal profile. This shifts the conversation from comparing students or groups of students to each other toward a growth mindset that rewards students showing continuous improvement.

What can districts do?

- Create custom student groups
- Calculate effect sizes for equity initiatives
- Track longitudinal achievement by student groups
- Automate personalized projections for students
- Standardize aggregate achievement metrics
- Identify students for special programming

Intended Users

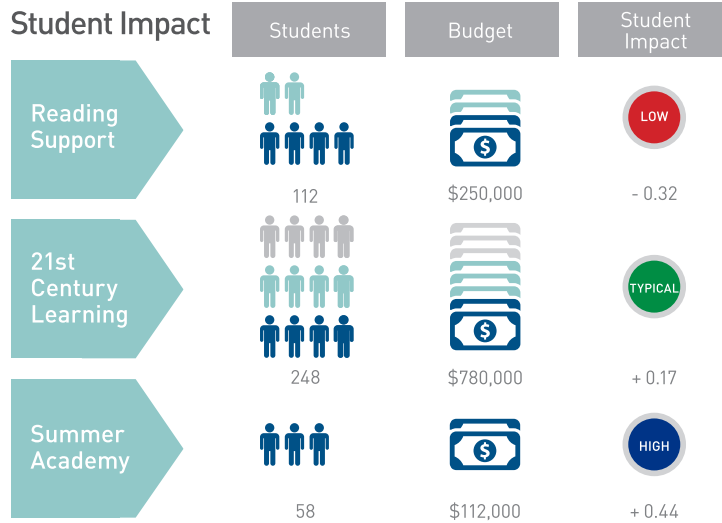
District and building-level administrators

School improvement teams

MTSS and RTI teams

Measure return on investment for equity initiatives

Student Impact



Ensure equitable growth recovery

Student Growth and Effect Size by Student Group

Group	Student Group	Student Count ^a	% Met Benchmark	% High Growth	% Expected Growth	% Low Growth	Effect Size
Ethnicity	Asian	14	27%	14%	79%	7%	+ 0.08
Ethnicity	Black	346	4%	7%	70%	23%	- 0.38
Ethnicity	Hispanic	162	10%	11%	64%	25%	- 0.32
Ethnicity	Other	207	10%	9%	67%	24%	- 0.30
Ethnicity	White	718	24%	13%	66%	22%	- 0.22
Gender	Female	720	17%	11%	70%	19%	- 0.16
Gender	Male	727	14%	10%	64%	26%	- 0.40
IEP	IEP	211	4%	10%	66%	23%	- 0.31
IEP	No IEP	1,236	18%	11%	67%	22%	- 0.27
Income	Low Income	930	9%	10%	67%	23%	- 0.32
Income	Not Low Income	517	28%	12%	67%	21%	- 0.21
LEP	LEP	101	2%	11%	72%	17%	- 0.16
LEP	Not LEP	1,346	17%	11%	66%	23%	- 0.29
EXPECTED				16%	68%	16%	0.00

^a Dot color is green for all growth scores that are not statistically significant
^a Student count only includes students with at least 2 predictors
 **Percentages may not add to 100 due to rounding
 ***Results not reported for groups with fewer than 5 students

Understand the personal context of each student



Bringing decisions into focus.

At ECRA, we focus on helping school districts embed evidence-based practices via predictive models that empower school leaders with the information needed to ensure a more equitable environment where all students succeed. ECRA helps educators and school leaders realize their mission and vision in a way that inspires and engages the community, aligns resources, and provides a framework for continuous improvement.

Education • Consulting • Research • Analytics

ECRA Group, Inc.

1475 E. Woodfield Rd., 14th Floor
Schaumburg, IL 60173
(847) 318-0072

ecragroup.com



ECRA Group
Education | Consulting | Research | Analytics